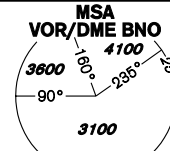


# INSTRUMENT APPROACH CHART - ICAO

AERODROME ELEV 778 - 28 hPa  
THR RWY 10 ELEV 764 - 28 hPa  
OCH RELATED TO THR RWY 10

TUŘANY/TOWER 119,600  
125,425  
121,500  
BRNO  
APPROACH/RADAR 120,550  
119,900  
121,500



**BRNO/Tuřany  
VOR  
RWY 10**

16°20'E 16°30' 16°40' 16°50'

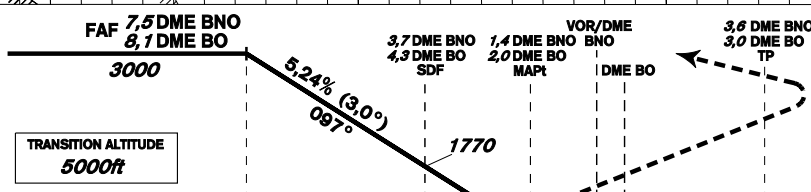
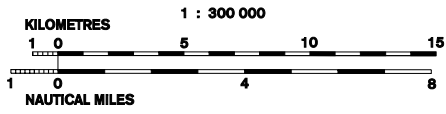
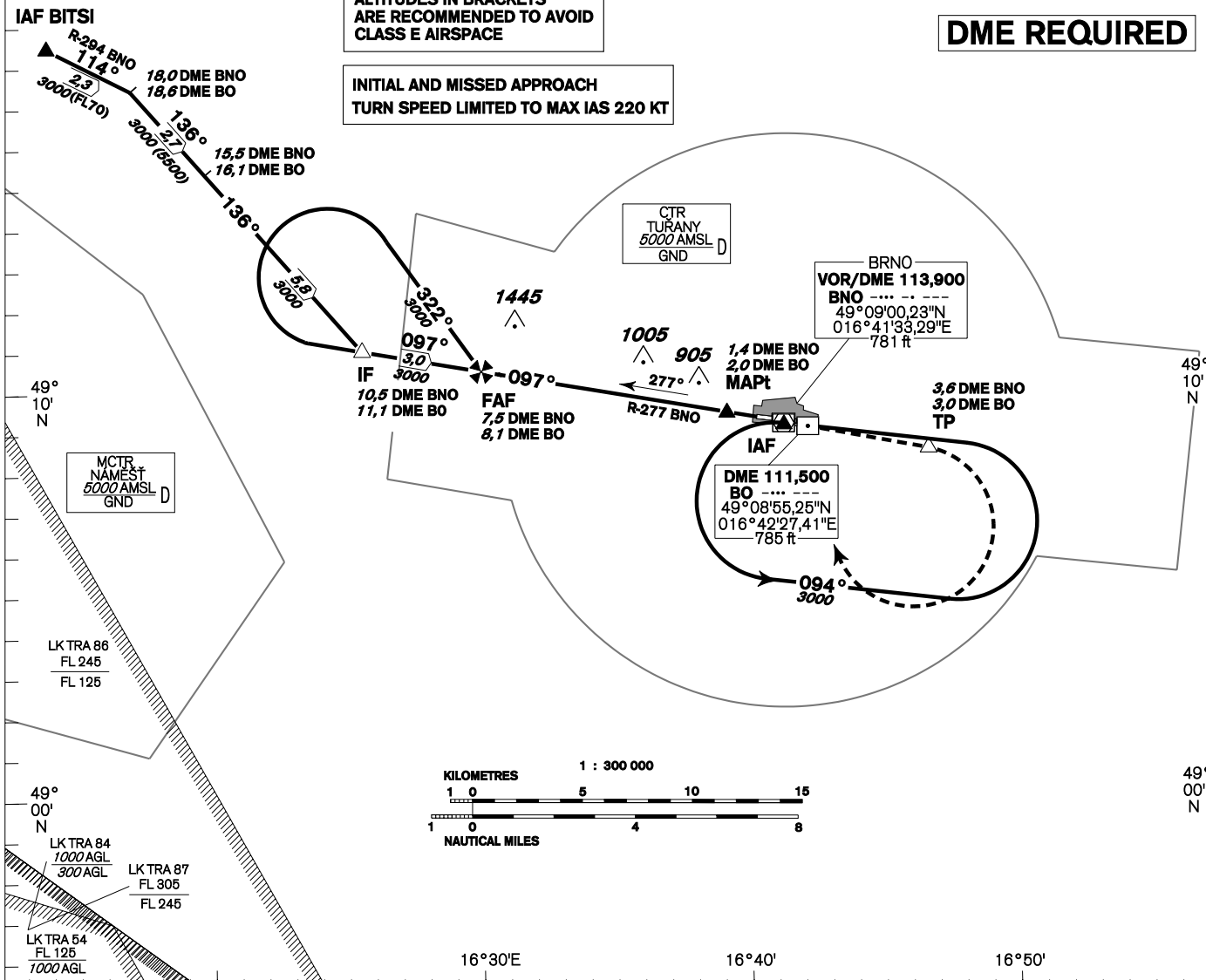
VAR 3°E 2010

BEARINGS, TRACKS AND RADIALS ARE MAGNETIC  
ALTITUDES AND ELEVATIONS IN FEET  
AND DISTANCES IN NM

ALTITUDES IN BRACKETS  
ARE RECOMMENDED TO AVOID  
CLASS E AIRSPACE

INITIAL AND MISSED APPROACH  
TURN SPEED LIMITED TO MAX IAS 220 KT

**DME REQUIRED**



**MISSED APPROACH:**  
Climb to 1500ft,  
max 3,6 DME BNO ( 3,0 DME BO),  
turn right to VOR/DME BNO  
in climbing to 3000ft.

THR 490910.34N 0164033.13E  
ELEV 764 - 28 hPa  
NM FM THR10

OCA/OCH	A	B	C	D
Straight - in Approach	1160/396			
Circling	1220R / -	1470R / -	1590R / -	1680R / -

DME BNO NM	7	6	5	4	3	2	1
DME BO NM	7,6	6,6	5,6	4,6	3,6	2,6	1,6
DIST THR NM	6,3	5,3	4,3	3,3	2,3	1,3	0,3
ALTITUDES ft	2830	2510	2190	1870	1550	1240	920

	kt	80	100	120	140	160	180
FAF - MAPt 6,1 NM	min:sec	4:35	3:40	3:03	2:37	2:17	2:02
Rate of descent	ft/min	420	530	640	740	850	960

Timing is not authorized for defining the MAPt.

change: vertical limits of LK TRAs

