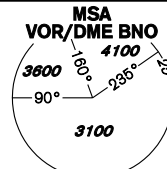


# INSTRUMENT APPROACH CHART - ICAO

AERODROME ELEV 778 - 28 hPa  
THR RWY 28 ELEV 771 - 28 hPa  
OCH RELATED TO THR RWY 28

TUŘANY/TOWER 119,600  
125,425  
121,500  
BRNO  
APPROACH/RADAR 120,550  
119,900  
121,500



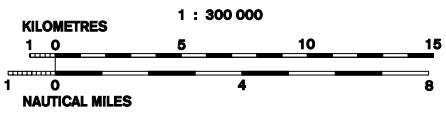
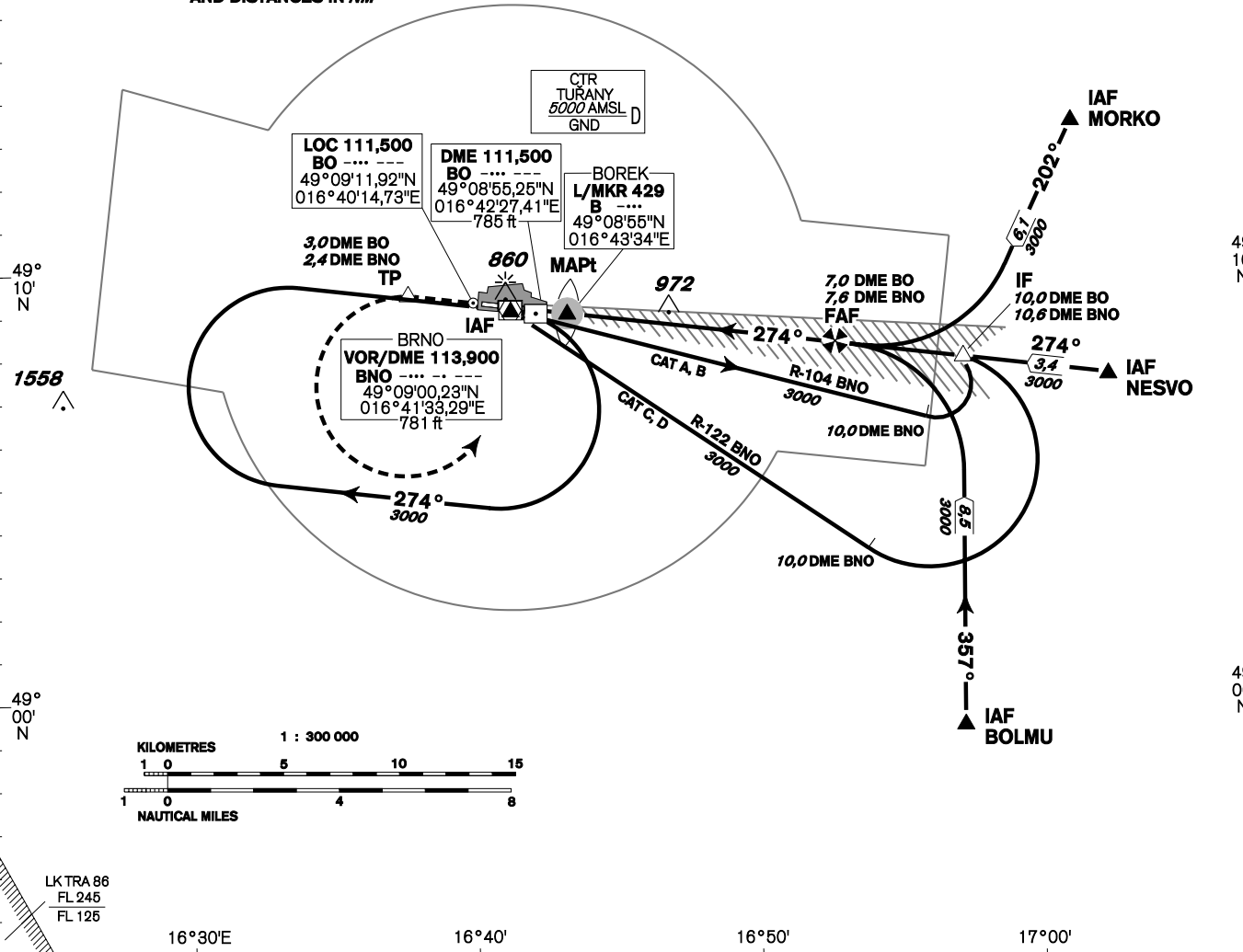
**BRNO/Tuřany  
ILS  
RWY 28**

VAR 3° E 2010

## DME REQUIRED

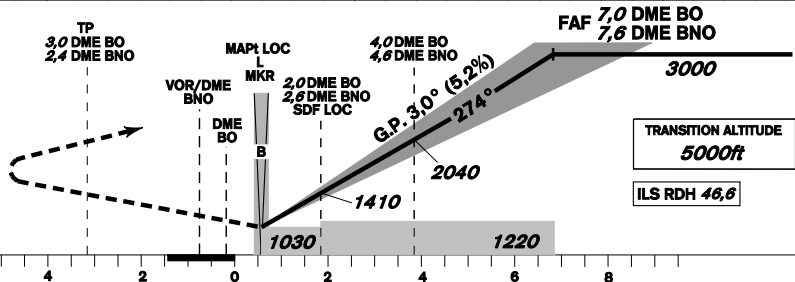
INITIAL AND MISSED APPROACH  
TURN SPEED LIMITED TO MAX IAS 220 KT

BEARINGS ARE MAGNETIC  
ALTITUDES AND ELEVATIONS IN FEET  
AND DISTANCES IN NM



**MISSED APPROACH:**  
Climb to 1500ft,  
max 3,0 DME BO ( 2,4 DME BNO),  
turn left to VOR/DME BNO  
in climbing to 3000ft.

THR 490859.12N 0164242.83E  
ELEV 771 - 28 hPa



change: vertical limits of LK TRAs

| OCA/OCH     |       | A           | B        | C        | D        |
|-------------|-------|-------------|----------|----------|----------|
| Straight-in | Cat I | ft 920/149  | 931/161  | 940/169  | 950/179  |
|             | LOC   | ft 1030/250 |          |          |          |
| Circling    |       | ft 1220 L/- | 1470 L/- | 1590 L/- | 1680 L/- |

| DME BO NM         | 8       | 7    | 6    | 5    | 4    | 3    | 2    | 1    |
|-------------------|---------|------|------|------|------|------|------|------|
| DME BNO NM        | 8,60    | 7,60 | 6,60 | 5,60 | 4,60 | 3,60 | 2,60 | 1,60 |
| DIST THR NM       | 7,84    | 6,84 | 5,84 | 4,84 | 3,84 | 2,84 | 1,84 | 0,84 |
| ALTITUDES ft      | 3320    | 3000 | 2680 | 2360 | 2040 | 1720 | 1410 | 1090 |
|                   | kt      | 80   | 100  | 120  | 140  | 160  | 180  |      |
| FAF - MAPt 6,3 NM | min:sec | 4:43 | 3:46 | 3:09 | 2:42 | 2:21 | 2:06 |      |
| Rate of descent   | ft/min  | 420  | 530  | 640  | 740  | 850  | 960  |      |

Timing is not authorized for defining the MAPt.